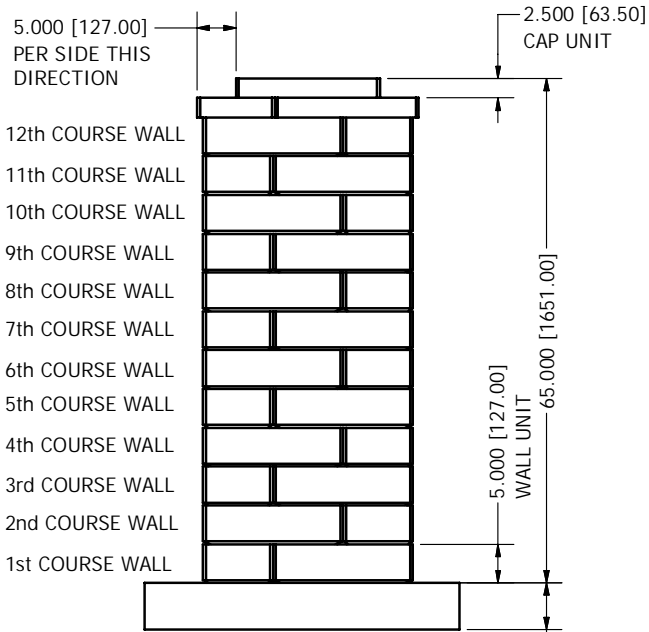
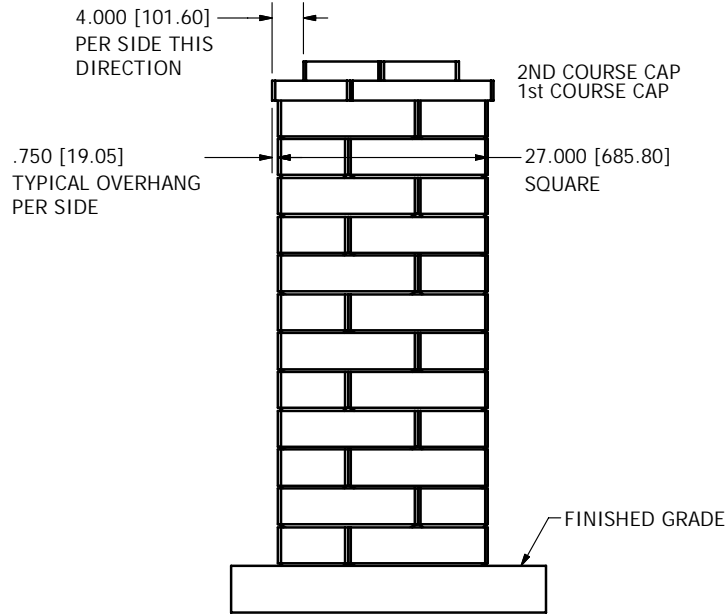


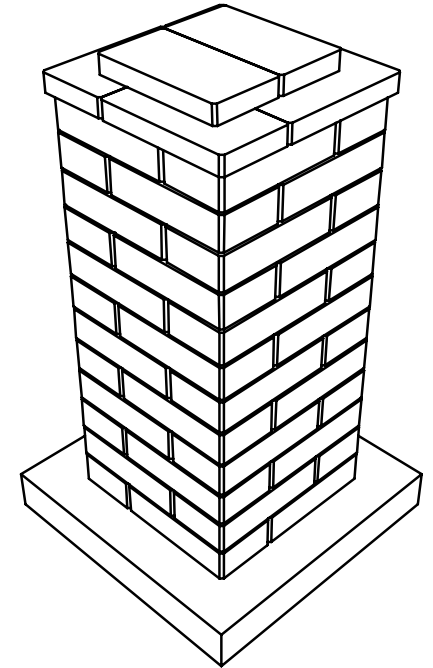
TOP VIEW



FRONT ELEVATION VIEW



SIDE ELEVATION VIEW



ISOMETRIC VIEW

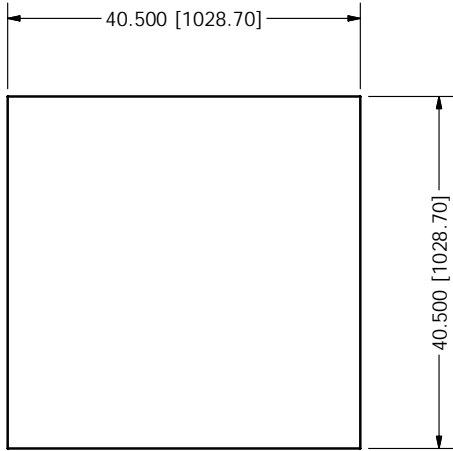
NOTE:

1. WALL UNITS TO BE INSTALLED WITH CHANNEL ON THE BOTTOM SIDE IN ORDER TO GET THE PROPER CONTEMPORARY ESTHETIC LOOK. (WALL PRODUCT TO BE INVERTED 180 DEGREES FROM FINISHED PALLET WHEN INSTALLED).
2. SECURE EACH UNIT USING APPROVED ADHESIVE OR BONDING AGENT FOLLOWING APPLICATION DIRECTIONS PROVIDED BY PRODUCT SUPPLIER.

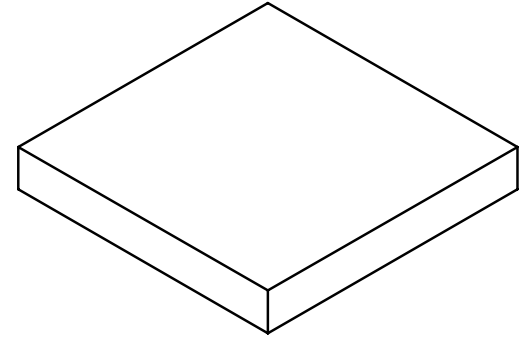
PRODUCT COUNTS:
 (48) TOTAL WALL UNITS
 (6) TOTAL CAP UNITS

PRELIMINARY

OUTDOOR LIVING DESIGNS



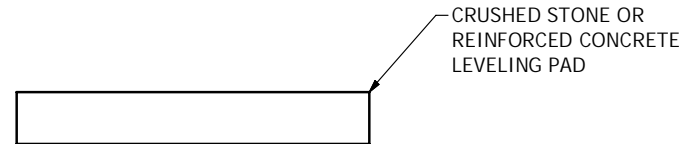
PLAN VIEW



ISOMETRIC VIEW



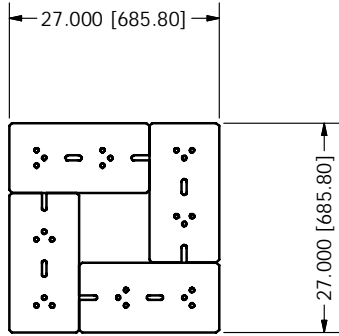
FRONT ELEVATION VIEW



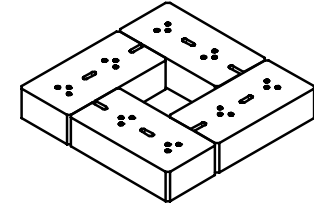
SIDE ELEVATION VIEW

NOTE:

1. WALL UNITS TO BE INSTALLED WITH CHANNEL ON THE BOTTOM SIDE (PRODUCT IS TO BE INVERTED 180 DEGREES FROM FINISHED PALLET).



PLAN VIEW



ISOMETRIC VIEW



FRONT ELEVATION VIEW

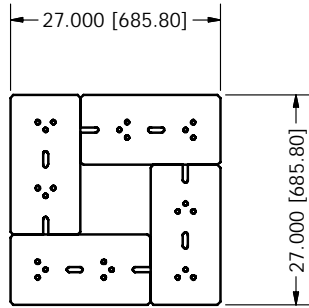


SIDE ELEVATION VIEW

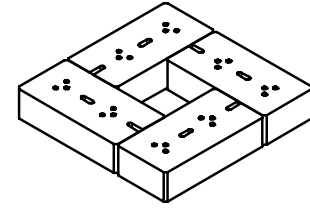
PRODUCT COUNTS:
(4) TOTAL WALL UNITS

NOTE:

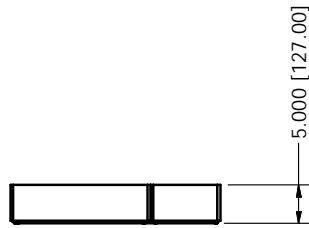
1. WALL UNITS TO BE INSTALLED WITH CHANNEL ON THE BOTTOM SIDE (PRODUCT IS TO BE INVERTED 180 DEGREES FROM FINISHED PALLET).



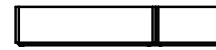
PLAN VIEW



ISOMETRIC VIEW



FRONT ELEVATION VIEW

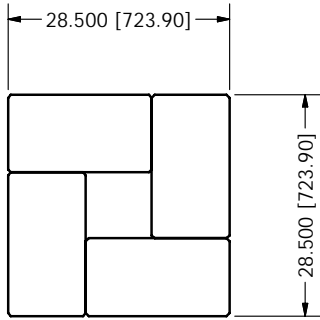


SIDE ELEVATION VIEW

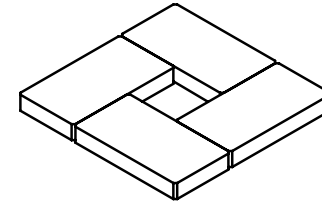
PRODUCT COUNTS:
(4) TOTAL WALL UNITS

PRELIMINARY

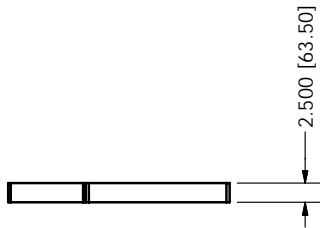
OUTDOOR LIVING DESIGNS



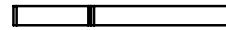
PLAN VIEW



ISOMETRIC VIEW



FRONT ELEVATION VIEW



SIDE ELEVATION VIEW

PRODUCT COUNTS:
(4) TOTAL CAP UNITS

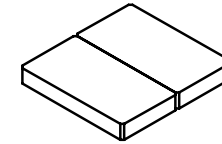
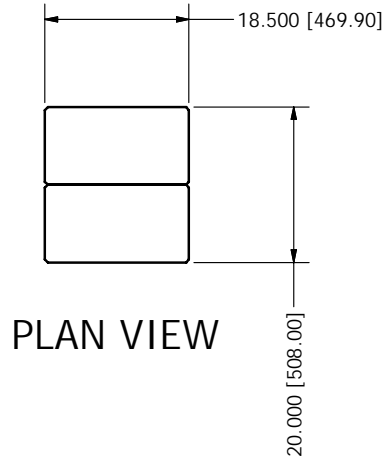
5-15-2024

LENZA 27 INCH SQUARE COLUMN - 1st CAP COURSE

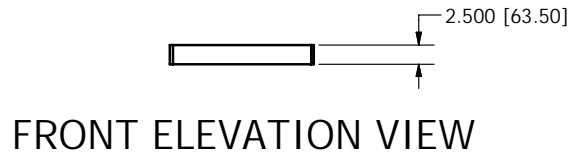
ROBERT LUNDELL
KEYSTONE RETAINING WALL SYSTEMS LLC

PRELIMINARY

OUTDOOR LIVING DESIGNS



ISOMETRIC VIEW



PRODUCT COUNTS:
(2) TOTAL CAP UNITS

5-15-2024

LENZA 27 INCH SQUARE COLUMN - 2nd CAP COURSE

ROBERT LUNDELL
KEYSTONE RETAINING WALL SYSTEMS LLC